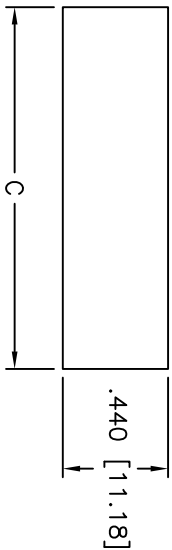
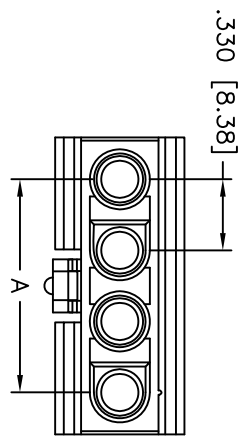


Rev	AWO #	Description	Date	Appr
-		RELEASED	8/20/10	

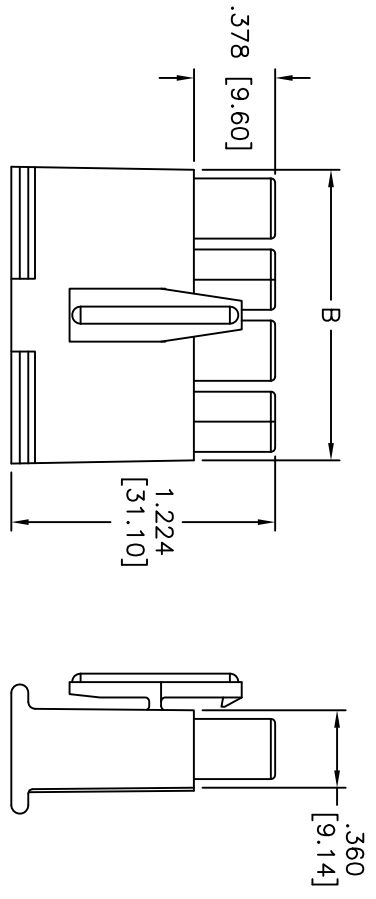
APPROVED: _____
 DATE: _____ TITLE: _____



RECOMMENDED PANEL HOLE CUTOUT



POSITIONS	Dimension		
	A	B	C
1	N/A	.360 [9.14]	.521 [13.23]
2	.330 [8.38]	.690 [17.52]	.851 [21.62]
3	.660 [16.76]	1.020 [25.90]	1.181 [30.00]
4	.990 [25.14]	1.350 [34.28]	1.511 [38.38]



SPECIFICATIONS:

Material:
 Insulator: Thermoplastic, rated UL 94V-2
 Insulator color: Natural
 Recommended panel thickness: .090" [2.29mm] Max.
Electrical:
 Current rating: 20A Max.
 Voltage rating: 600V
 Dielectric withstanding voltage: 1500V AC/minute
 Temperature range: -40°C to +105°C
Environmental:
 Lead free, RoHS compliant.



UNLESS OTHERWISE SPECIFIED ALL DIMENSIONS ARE INCHES [MM]	
TOLERANCES: EXCEPT AS NOTED	
INCHES	HOLDS
.X ± .10	ØX ± .10
.XX ± .020	ØXX ± .015
.XXX ± .015	ØXXX ± .010
APPROVALS	DATE
DRAWN	DY
CHECKED	8/20/10
APPROVED	

ADAM TECH
 909 Rahway Avenue, Union, NJ 07083
 Phone: 908-687-5000 Fax: 908-687-5710

TITLE	SIZE	PART NO.	REV.
.125" [3.18mm] DIAMETER HOUSING, MALE	X	DMO-XX	
REF: S00723T	SCALE: NTS	SHEET 1 OF 1	